



**LYNNFIELD CENTER WATER DISTRICT**

**Proposed Station 2 to Station 4 Raw Water Transmission Main and Sagamore Easement**

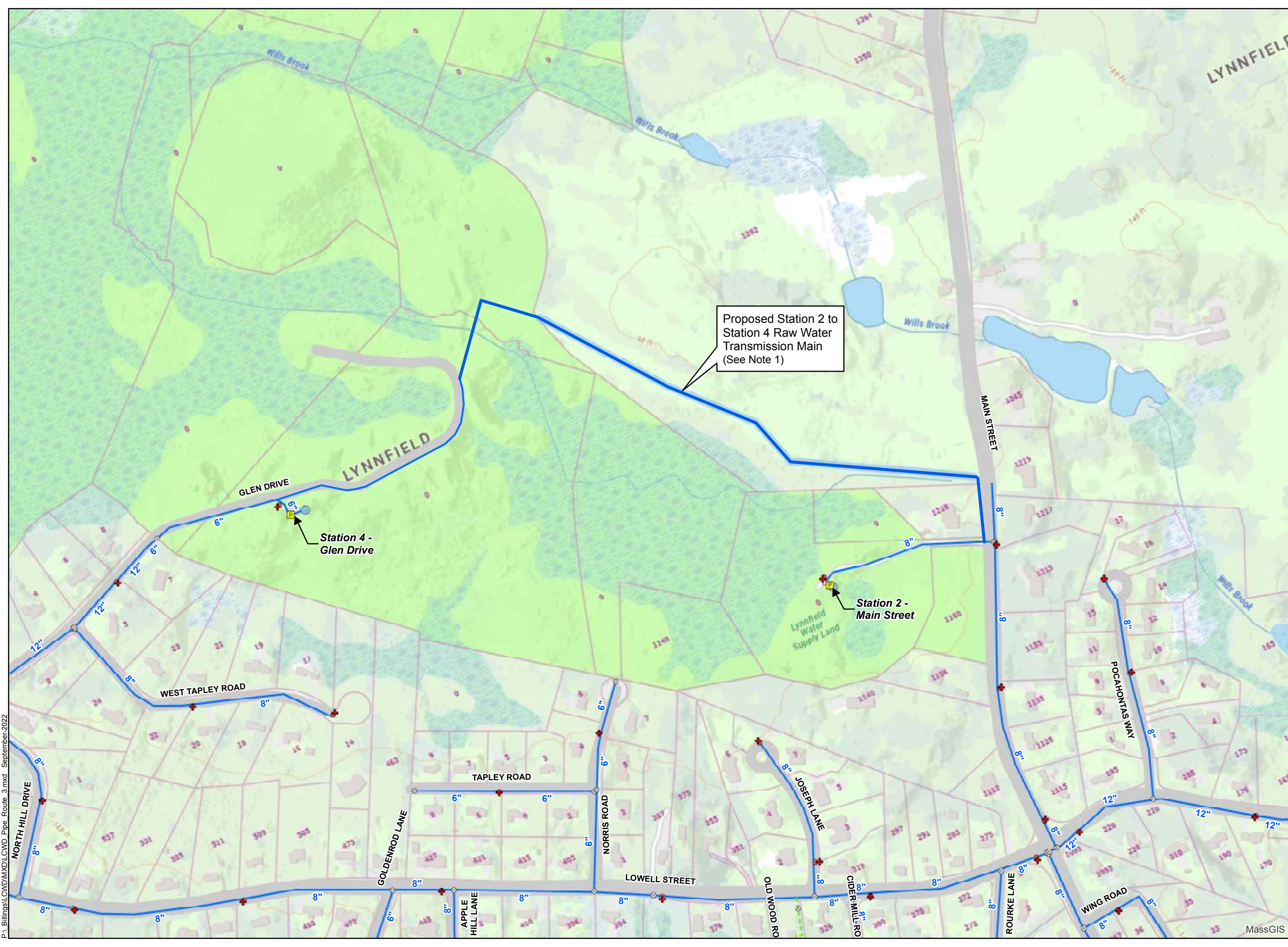
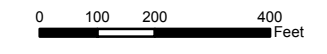
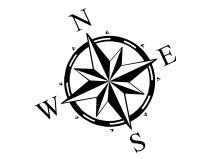
**Water Network Features**

- Hydrant
- Hydrant Valve
- System Valve
- Water Tank
- Distribution Pipe
- Hydrant Lateral
- Private Pipe
- Well Discharge
- Wellfield Raw Water Supply
- Water District Boundary
- Route Option 3
- 15' Easement

**Other Water Network Features**

- Basemap**
- Town Boundary
  - Interstate
  - U.S. Highway
  - Local Road

Note 1: Location of the transmission main is approximate and will be at least 100 feet from the wetland boundary



P:\Billings\LC\WDM\XDC\WDC Pipe Route 3.mxd September-2022