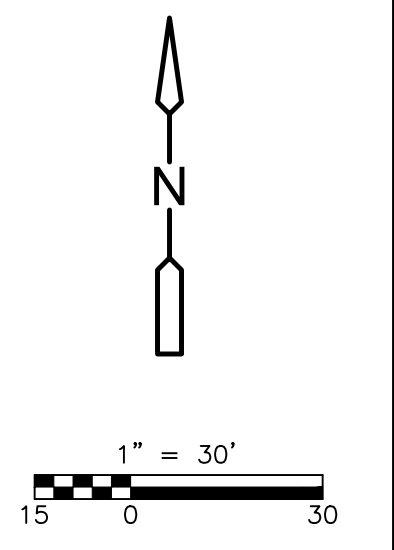
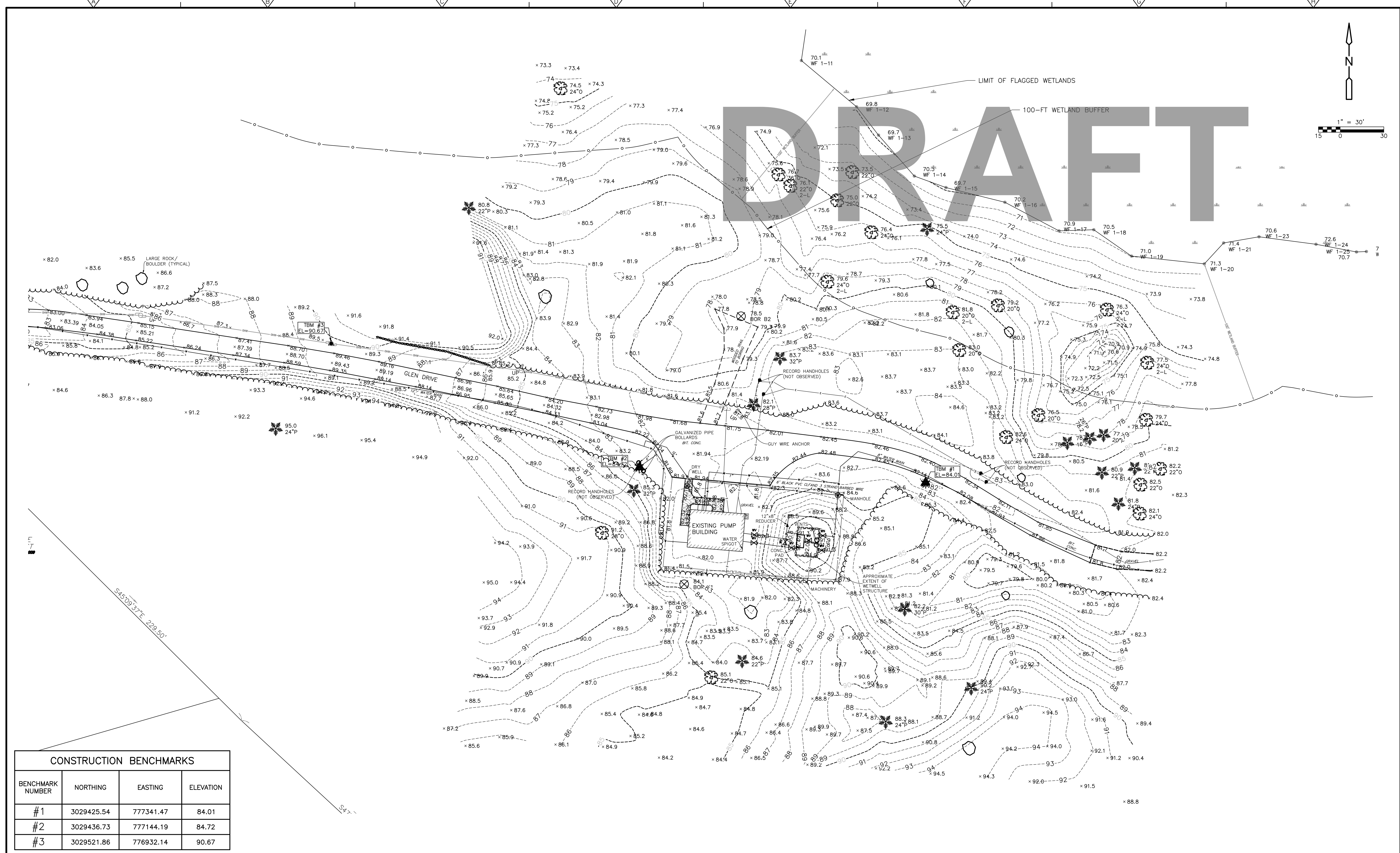


© 2023 CDM SMITH ALL RIGHTS RESERVED. REUSE OF DOCUMENTS: THESE DOCUMENTS AND DESIGNS PROVIDED BY PROFESSIONAL SERVICE, INCORPORATED HEREIN, ARE THE PROPERTY OF CDM SMITH AND ARE NOT TO BE USED, IN WHOLE OR PART, FOR ANY OTHER PROJECT WITHOUT THE WRITTEN AUTHORIZATION OF CDM SMITH.



# DRAFT

| CONSTRUCTION BENCHMARKS |            |           |           |
|-------------------------|------------|-----------|-----------|
| BENCHMARK NUMBER        | NORTHING   | EASTING   | ELEVATION |
| #1                      | 3029425.54 | 777341.47 | 84.01     |
| #2                      | 3029436.73 | 777144.19 | 84.72     |
| #3                      | 3029521.86 | 776932.14 | 90.67     |

| REV. NO. | DATE | DRWN | CHKD | REMARKS |
|----------|------|------|------|---------|
|          |      |      |      |         |
|          |      |      |      |         |

DESIGNED BY:            K. DRAKE  
 DRAWN BY:            A. MURRAY  
 SHEET CHK'D BY:            X  
 CROSS CHK'D BY:            X  
 APPROVED BY:            X  
 DATE:            JUNE 2023



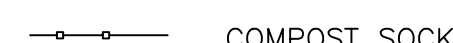





LYNNFIELD CENTER WATER DISTRICT  
 LYNNFIELD, MASSACHUSETTS  
**GLEN DRIVE WATER TREATMENT PLANT**

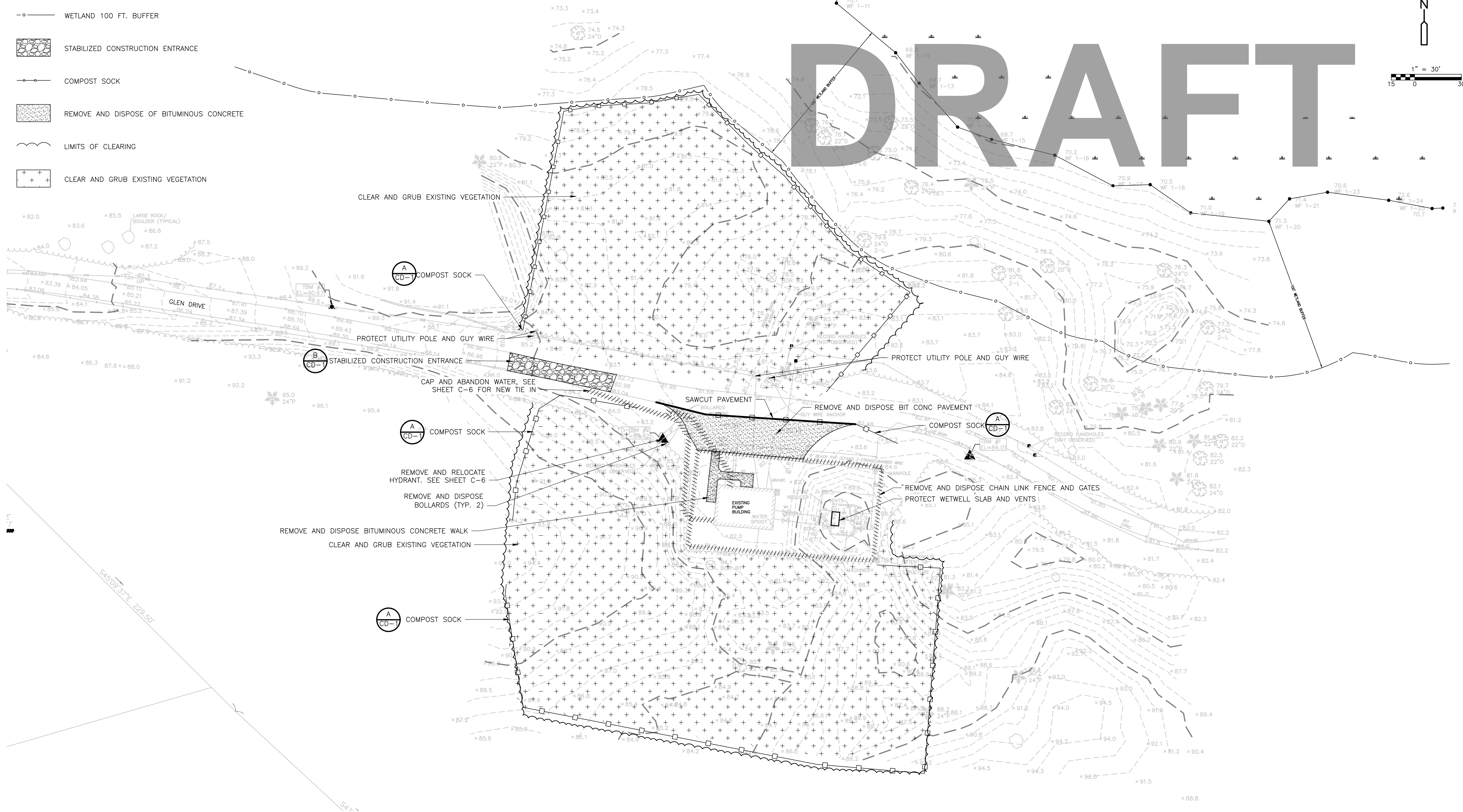
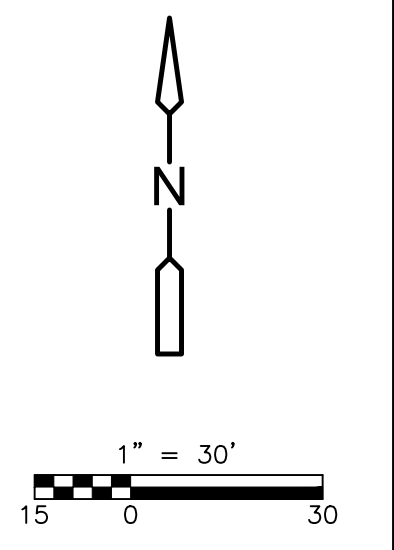
**EXISTING CONDITIONS PLAN**

PROJECT NO. 0690-265722  
 FILE NAME: C001EXPL.DWG  
 SHEET NO.  
**C-2**

LEGEND

-  WETLAND 100 FT. BUFFER
-  STABILIZED CONSTRUCTION ENTRANCE
-  COMPOST SOCK
-  REMOVE AND DISPOSE OF BITUMINOUS CONCRETE
-  LIMITS OF CLEARING
-  CLEAR AND GRUB EXISTING VEGETATION

# DRAFT



© 2023 CDM SMITH ALL RIGHTS RESERVED. REUSE OF DOCUMENTS: THESE DOCUMENTS AND DESIGNS PROVIDED BY PROFESSIONAL SERVICE, INCORPORATED HEREIN, ARE THE PROPERTY OF CDM SMITH AND ARE NOT TO BE USED, IN WHOLE OR PART, FOR ANY OTHER PROJECT WITHOUT THE WRITTEN AUTHORIZATION OF CDM SMITH.

| REV. NO. | DATE | DRWN | CHKD | REMARKS |
|----------|------|------|------|---------|
|          |      |      |      |         |
|          |      |      |      |         |
|          |      |      |      |         |

DESIGNED BY:            K. DRAKE  
 DRAWN BY:            A. MURRAY  
 SHEET CHK'D BY:            X  
 CROSS CHK'D BY:            X  
 APPROVED BY:            X  
 DATE:            JUNE 2023

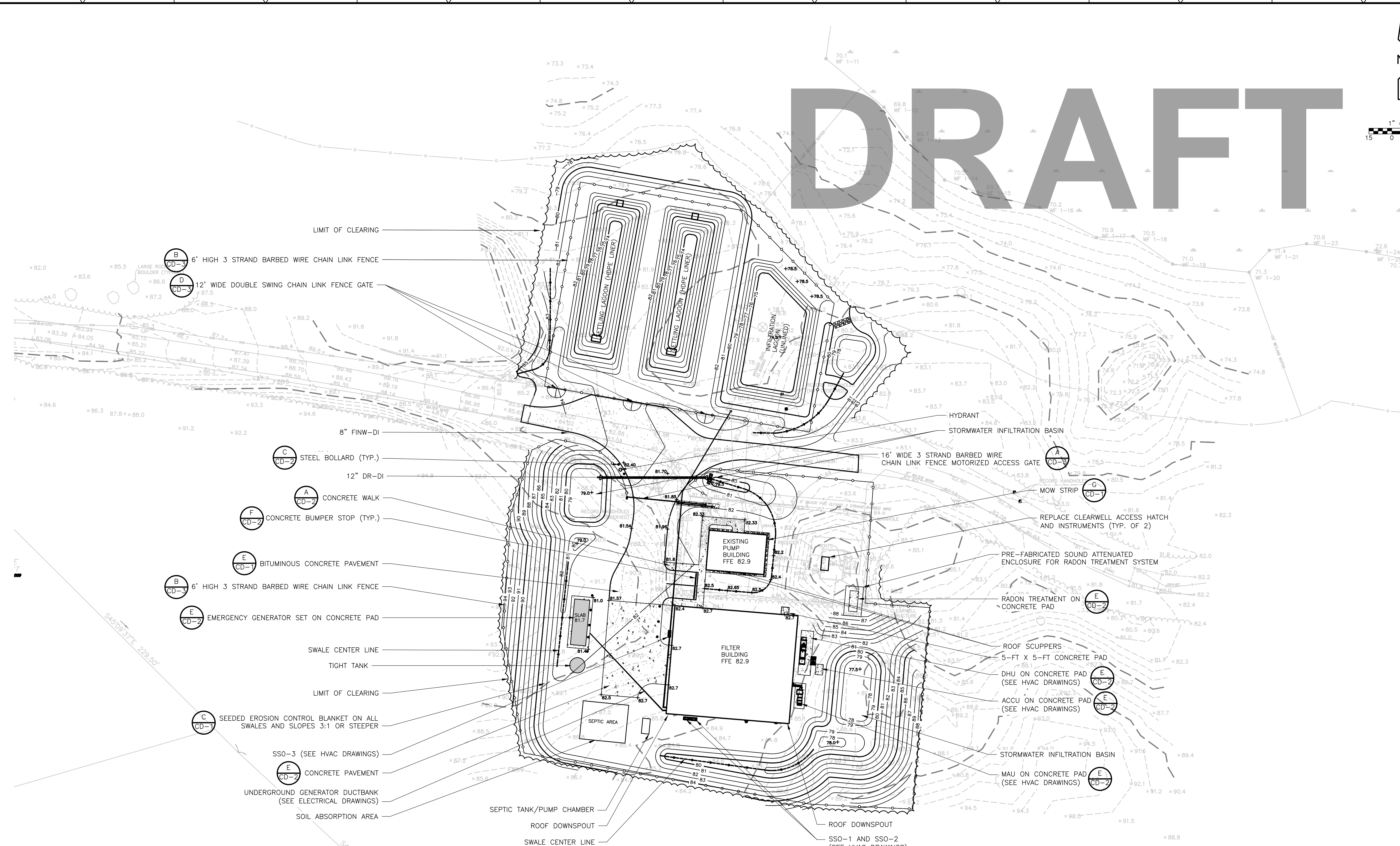
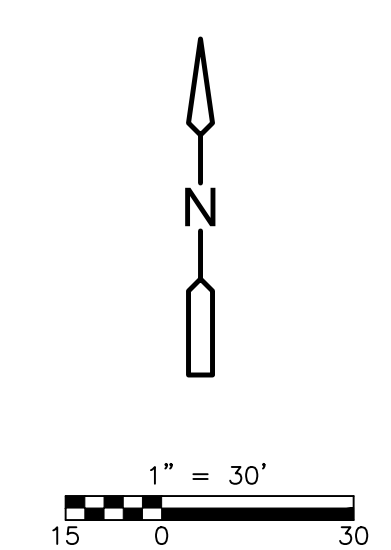


LYNNFIELD CENTER WATER DISTRICT  
 LYNNFIELD, MASSACHUSETTS  
**GLEN DRIVE WATER TREATMENT PLANT**

**REMOVALS AND EROSION AND  
 SEDIMENTATION CONTROL PLAN**

PROJECT NO. 0690-265722  
 FILE NAME: C003ESPL.DWG  
 SHEET NO.  
**C-3**

# DRAFT



- B CD-3 6' HIGH 3 STRAND BARBED WIRE CHAIN LINK FENCE
- D CD-3 12' WIDE DOUBLE SWING CHAIN LINK FENCE GATE
- C CD-2 STEEL BOLLARD (TYP.)
- A CD-2 12" DR-DI
- F CD-2 CONCRETE BUMPER STOP (TYP.)
- E CD-7 BITUMINOUS CONCRETE PAVEMENT
- B CD-3 6' HIGH 3 STRAND BARBED WIRE CHAIN LINK FENCE
- E CD-2 EMERGENCY GENERATOR SET ON CONCRETE PAD
- C CD-7 SEEDED EROSION CONTROL BLANKET ON ALL SWALES AND SLOPES 3:1 OR STEEPER
- E CD-2 CONCRETE PAVEMENT
- E CD-2 UNDERGROUND GENERATOR DUCTBANK (SEE ELECTRICAL DRAWINGS)
- E CD-2 SOIL ABSORPTION AREA
- E CD-2 SS0-3 (SEE HVAC DRAWINGS)
- E CD-2 CONCRETE PAVEMENT
- E CD-2 UNDERGROUND GENERATOR DUCTBANK (SEE ELECTRICAL DRAWINGS)
- E CD-2 SOIL ABSORPTION AREA

PLAN

| REV. NO. | DATE | DRWN | CHKD | REMARKS |
|----------|------|------|------|---------|
|          |      |      |      |         |
|          |      |      |      |         |
|          |      |      |      |         |

|                       |
|-----------------------|
| DESIGNED BY: K. DRAKE |
| DRAWN BY: A. MURRAY   |
| SHEET CHK'D BY: X     |
| CROSS CHK'D BY: X     |
| APPROVED BY: X        |
| DATE: JUNE 2023       |



LYNNFIELD CENTER WATER DISTRICT  
 LYNNFIELD, MASSACHUSETTS  
**GLEN DRIVE WATER TREATMENT PLANT**

**SITE PLAN**

|                         |
|-------------------------|
| PROJECT NO. 0690-265722 |
| FILE NAME: C004STPL.DWG |
| SHEET NO. C-4           |

© 2023 CDM SMITH ALL RIGHTS RESERVED. REUSE OF DOCUMENTS: THESE DOCUMENTS AND DESIGNS PROVIDED BY PROFESSIONAL SERVICE, INCORPORATED HEREIN, ARE THE PROPERTY OF CDM SMITH AND ARE NOT TO BE USED, IN WHOLE OR PART, FOR ANY OTHER PROJECT WITHOUT THE WRITTEN AUTHORIZATION OF CDM SMITH.