



2023 Year in Review

- At the May 6, 2023 Annual District Meeting, district residents voted to appropriate State Revolving Funds (SRF) at a 0% interest rate for the Glen Drive Water Treatment Plant that will now include treatment for PFAS in addition to Iron and Manganese as originally planned. The Glen Drive Treatment Plant bids will open on Thursday, March 21, 2024 and construction is anticipated to start in the next few months.
- Station 2 PFAS Pilot Program is operating and tested at Non-Detect PFAS levels for all of 2023. LCWD operates the system in accordance with the DEP pilot permit and conducts sampling on a regular basis.
- Pipeline for the Wakefield Interconnection on Main Street and Bay State Road was completed. This transmission main is now active and operated by the Town of Wakefield. It now has ample supply to provide LCWD with MWRA water for the interconnection.
- Weston & Sampson has officially joined the project teams in the role of Owners Project Manager (OPM) for the Glen Drive WTP. In this capacity, they will provide oversight and resident field engineering of work on the plant and other capital projects needed.
- The Interbasin Transfer Act and MWRA Admission process is still moving forward and on schedule for approval in Spring of 2025.
- LCWD also performed extensive work on Edward Avenue in advance of DPW Road paving. Work included the removal of substandard water services into homes, hydrant, and gate valve replacements.

Rate Changes:

At the February 26, 2024 meeting, the Board of Water Commissioners voted a change to the current rate structure.

The new rates went into effect March 1, 2024. For more information on the rates, please visit <https://lcwd.us/fees/water-rates-district-tax/>

The new rates are as follows:

LCWD Volumetric Rates	
Tier 1: 0 to 24 Kgal	\$11.30/ Kgal
Tier 2: > 24 Kgal	\$25.94/Kgal

*Kgal is equal to 1,000 gallons of water

The Fixed Charge has increased to \$35 per quarter for residential accounts and \$70 for Other.

Volumetric Statements are issued quarterly. Quarters shall consist of:

- March, April, and May consumption will be billed in June.
- June, July, and August consumption will be billed in September.
- September, October, and November consumption will be billed in December.
- December, January, and February consumption will be billed in March.

A tax levy component of the revenue is collected at an assessed rate of \$0.46 per \$1,000 valuation.

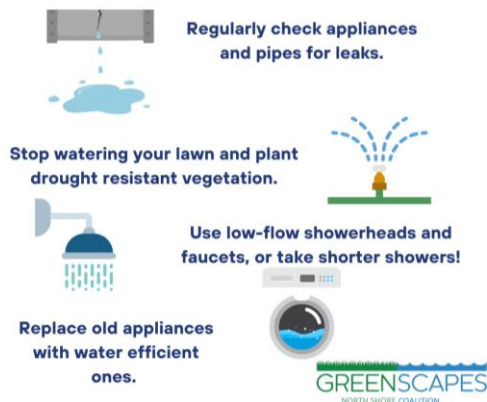
Tax Levy charges are included with the quarterly tax bill issued by the Town of Lynnfield.

Check our website regularly for updates on FY25 Annual District Meeting, Capital Improvement Projects, Spring Flushing Schedule and more!

Spring LCWD Happenings for 2024

- The bid process for the Glen Drive WTP has been completed and is to be awarded in April and under contract by June. Completed construction and start up is expected by December 2025.
- DEP Permitting of the interconnection vault continues to move forward with anticipated completed construction and start up date in the fall of 2024 with a goal of MWRA Admission completed in early 2025.
- LCWD is coordinating with the DPW to complete water upgrades in various locations in advance of the Lynnfield DPW Road Program.
- Spring Flushing is anticipated to begin mid-April and go through the month of May. There will be a second program in the fall.
- New water main is being installed on Vallis Way, near 109 Lowell Street and several upgrades and repairs are taking place on the existing system in this area. This work is all being performed by the Developer of this project.
- LCWD continues to work with engineers and the development team of The Regency (on Sagamore Golf Course) for the expansion of the system to support this upcoming project. Permit approvals are anticipated this spring and work could start later this summer.

Water Goals for 2024 - Commit to Use Less Water and Save Money



Sign up for WaterSmart for Money Saving Tips!

- View your monthly usage on WaterSmart and set usage parameters.
- Receive monthly notifications of potential leaks and higher than normal usage.
- WaterSmart offers easy to navigate trouble-shooting tips for potential leaks.
- WaterSmart also provides conservation tips on how to conserve and save money on your water bill!
- Scan the QR code on your most recent water bill to sign up for the portal!



Plan your landscaping projects in April and early May

- Plant drought-tolerant, low maintenance native plants.
- Cut down on your water consumption by watering your lawn at dawn and only, when necessary, as determined by the "walk test."

2024 Annual District Meeting is on Monday, May 6, 2024 at 6:00 P.M.

THE IMPORTANCE OF KEEPING YOUR WATER METER ACCESSIBLE

Water meters are typically installed in basements close to the water supply entrance into your home. LCWD employees need unobstructed access to water meters for testing, inspections, troubleshooting and maintenance. More importantly, this is the likely location for the main shutoff valve for water in your home which must always be accessible for emergency shutoff in the event of leaks. Most meters are now read remotely without the need to access your home. However, if you still have an outdoor reader connected to the meter with wiring, please make sure the wires are well maintained, not cut, severed, or damaged. If any of this takes place, please contact LCWD immediately so that we can come out and make the necessary repairs. Your assistance in this and in maintaining a functioning water shutoff valve prior to the meter is appreciated. If you have any questions about this, please contact us at 781-334-3901.



Picture above is a Neptune T-10 meter used in LCWD resident homes.

TOWN OF LYNNFIELD RAIN BARREL PROGRAM

The Town of Lynnfield is offering discounted rain barrels to residents for **\$89.00**.

- Holds 60 gallons of chemical free rainwater.
- Sturdy construction and 100% recycled.
- Available in 3 earth tone colors or unpainted.
- Pays for itself in 1 season!



To purchase, or for more information, search for Lynnfield on: www.greatamericanrainbarrel.com/community.

Deadline to purchase is June 2, 2024, midnight.

Barrels will be available for pickup on Saturday, June 15th from 9:00 am to 11:00 am at Lynnfield DPW (rear yard).

Need help ordering? Email: sales@tgarb.com

FLUSHING is an integral part of good maintenance of LCWD's infrastructure. Flushing twice a year scours the pipes for buildup and helps to remove sediment in the pipes. Flushing is done in the spring and fall. Notifications for when flushing will begin are posted on our website and in the local newspaper.



High velocity unidirectional flushing



Results after flushing

IRRIGATION WELLS & BACKFLOW DEVICES

Q: I am interested in digging a well. What do I need to do?

A: **Contact Lynnfield's Board of Health for a permit.**

Q: I have a well for irrigation, do I need to get my well inspected?

A: **Yes. All private wells need to be inspected by LCWD personnel and verified no cross connection is present. Please call 781-334-3901 immediately for an inspection.**

Q: Why is a Water Backflow Prevention Device important?

A: **A Water Backflow Prevention Device is a device that works to protect potable water from contamination or pollution due to backflow.**

WHAT IS A CROSS CONNECTION AND WHY IS IT NOT ALLOWED IN YOUR HOME.

Q: What is a Cross Connection?

A: **A cross connection is any actual or potential physical connection between a pipe conveying potable water from a public water system and any non-potable water supply, piping arrangement or equipment including, but not limited to, waste pipe, soil pipe, sewer drain, other unapproved sources.**

Q: Why is removing a cross connection important?

A: **It is a matter of public health and safety.**

Q: What is LCWD doing to prevent cross connections in the district's water system?

A: **LCWD Board of Water Commissioners passed a Cross Connection By-law on September 19, 2016 to protect the health and safety of all consumers of the district's water supply.**

Q: How can district customers help eliminate this potential health hazard?

A: **If you have a well for irrigation, please call the office at 781-334-3901 to schedule an appointment to verify there is no cross connection present.**

Q: What happens if I have a cross connection and it is not removed?

A: **If the cross connection is not removed within 15 days, the district has the right to fine the resident of not more than \$25,000 per day until the cross connection is removed.**

Q: Where can I find more information on cross connections?

A: **Go to www.Mass.gov and search for cross connection, Mass. M.G.L. 310 CMR 22.22**

Lynnfield Center Water District
83 Phillips Road
Lynnfield, MA 01940
Phone: (781) 334-3901
Email: lcwd@lcwd.us
www.lcwd.us